

## THOR<sup>®</sup> – jaw and cone crusher liners made from inoculated austenitic manganese steel

### Game-changing solution

THOR<sup>®</sup> steel jaw and cone crusher liners allow end users to cut their costs in two ways. First, a straightforward lining expenses reduction is obtained with a smaller annual consumption of liner sets. Second, due to longer achieved operating time less equipment downtime for liner changeout is required.

### Upgraded casting technology

Complex inoculation process we use allows forming unique crystallization conditions for manganese steels. We obtain fine-grained microstructure that supports higher strength of castings. Combined with in-ladle removal of tramp elements and non-metallic inclusions this gives THOR<sup>®</sup> castings higher tensile strength, better abrasion resistance, and longer overall lifetime compared to regular liners.

## Advantages of THOR<sup>®</sup> liners:



**Longer  
product lifetime**

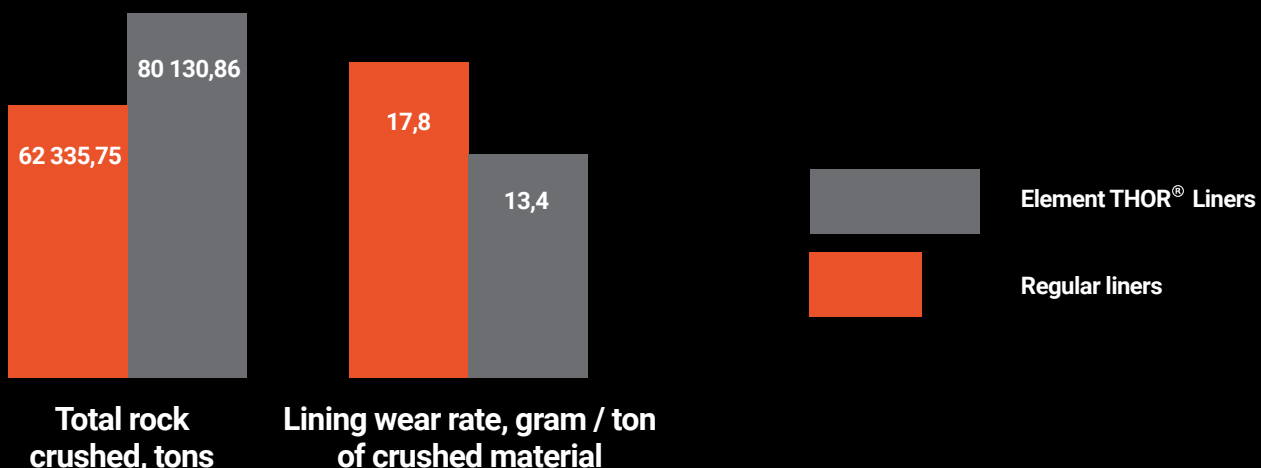


**Lower  
production costs**

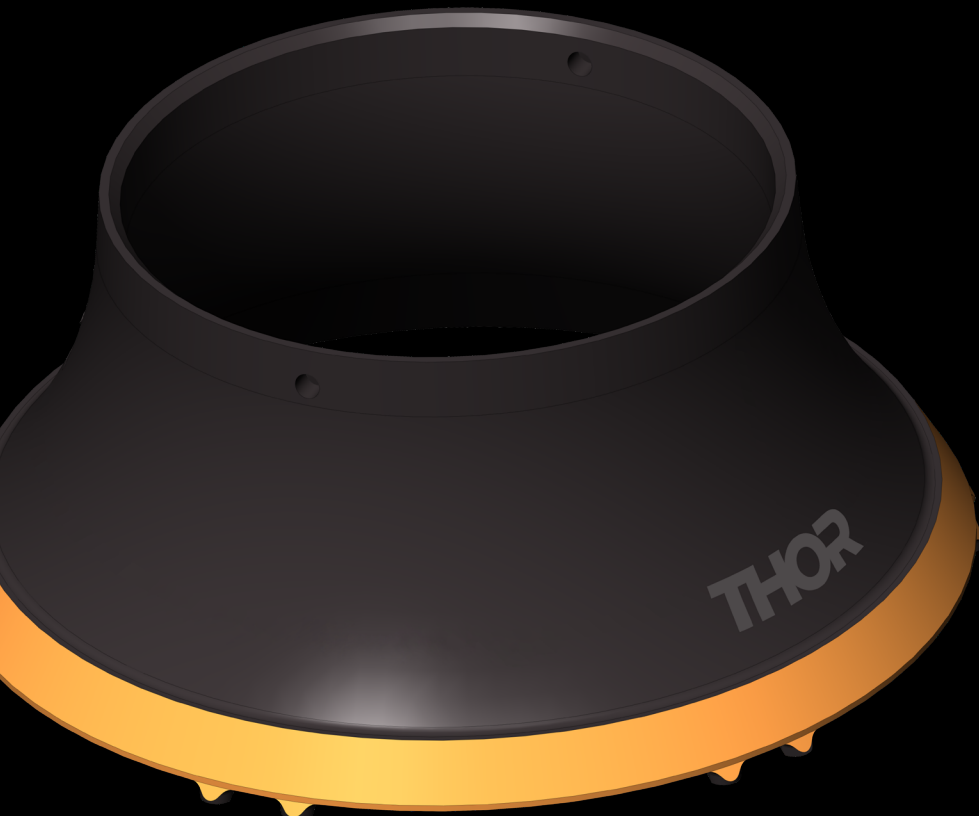


**Reduced number  
of maintenance outages**

## Test results\*:



\* Based on trials of 6 sets of THOR<sup>®</sup> cone medium coarse crusher liners in 2019.



### **Element Group Oy**

Address: FI-33100 Tampere, Finland  
Peltokatu 26  
Tel: +358 10 340 3980  
Email: [info@element.global](mailto:info@element.global)

### **Mining Element LLC**

Address: 196105, Russia, St. Petersburg,  
Reshetnikova ul., 14A  
Tel: +7 (812) 900-85-70  
Email: [pro@element.global](mailto:pro@element.global)